

Transition into Year 1

St Michael's Nursery and Infant School

July 2024



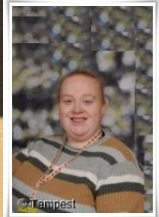
A little bit about us.....



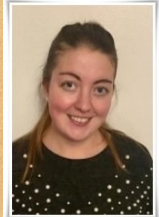
Our Key Stage One Lead is Mrs Regan.



Mrs Regan



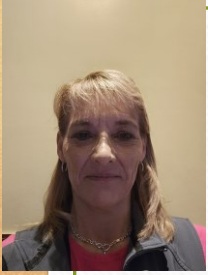
Miss Swinburne teaches the Year 2 children every morning and in the afternoons, she will teach Year 1 and Year 2 for some of the afternoon subjects.



Miss Birch- I am the Year 1 teacher and I mainly teach Year 1 and throughout the week I will also teach Year 2 for some afternoon subjects.



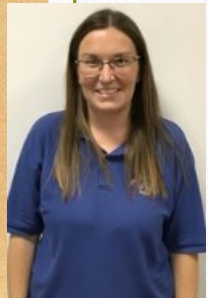
Mrs Denwood is going to be new to our school and she will teach Year 1 and Year 2 every Tuesday.



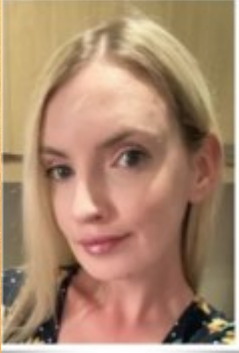
Mrs Kelly works as a HLTA; Higher Level Teaching Assistant. Her job is to support both KS1 teachers and to lead the team of KS1 teaching assistants. She teaches Year 1 and Year 2 for certain subjects in the afternoons. She will mainly be based in Year 1.



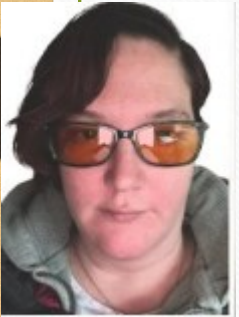
Miss Smith is our Year 2 Teaching Assistant who will also support the Year 1 children in particular subjects. She is Pastoral Lead and she works hard to support the children and families we serve.



Mrs Musgrave is new to our school and she is one of our Year 1 Teaching Assistants who will mainly support the SEND children in Year 1.



Miss Long is one of our Year 1 Teaching Assistants who will mainly support the SEND children in Year 1.



Miss Thompson is one of our Year 1 Teaching Assistants who will mainly support the SEND children for two mornings per week.

Safeguarding Children

- It is our duty to safeguard your child.
- Their safety and wellbeing comes before EVERYTHING!
- All staff in Key Stage One are trained in both Safeguarding and Prevent.
- We are proud to have such high safeguarding standards in our school.



Mrs Regan-
Designated
Safeguarding
Lead



Mrs Hudson-
Deputy
Designated
Safeguarding Lead

Welcome to Year 1



- I believe the transition from Reception to Year 1 is such a HUGE transition for children to make.
- When coming into Year 1, your child will experience many changes. There is a timetable that is followed and the lessons are much more structured.
- Your child will be assessed based on the National Curriculum, whereas in Reception they are assessed using the Early Years framework.
- Continuous provision will still be accessible in the classroom, but the children will not access it as often.

Our week in Key Stage 1

Monday	Tuesday	Wednesday	Thursday	Friday
Read Write Inc	Read Write Inc	Read Write Inc	Read Write Inc	Read Write Inc
Whole School Assembly	Class Assembly	Whole School Assembly	Class Assembly	Whole School Praise Assembly
Maths	Maths	Maths	Maths	Feel Good Friday
Storytime	Storytime	Storytime	Storytime	Storytime
Lunchtime	Lunchtime	Lunchtime	Lunchtime	Lunchtime
History/Geography	Design and Technology	RE	Science	Art
PSHE	PE – Sports Coach	PE - Yoga	Music	Computing Golden Time

Coming into School each day.....



-
- Each morning the children will enter school via the downstairs KS1 door (the door closest to the main entrance gate and pathway). They will be greeted by staff and they will be available to speak to. Please pass on any messages you have and we can also collect monies and letters etc. from you each morning.
 - We will continue to have **no parents in the classrooms**, as the children are now used to this system. It is also much better for little ones with attachment worries, as it causes less emotional stress.
 - Breakfast is the most important meal of the day. Children cannot function without it. Please make sure they have eaten and had a drink before coming to school. Breakfast will also continue to be provided in school to every child!
 - Please make sure that your child brings a coat and their book bag into school each day.
 - PE kits should be left on children's pegs for the full half term. They will be sent home at the end of every half term for washing.
 - **PUNCTUALITY** is essential. Our door closes promptly at 8.45AM. Every minute counts! If you arrive after this time, please go to the main entrance as the KS1 door will be locked. Read Write Inc begins promptly after the register.

Leaving School each day.....

- The children will exit school from the Hall door, situated near Station Road gate.
- Children will exit school in small groups as and when their adults are spotted. Please bare with us as we get to know you.
- If staff need to speak with you about your child, you will be left until the end or until the majority of pupils have exited.



Homework

- Homework will be given out later on in the term and I will let you know about this via Dojo.
- The homework books will be handed out every Monday and due in on Friday.
- Your child may be given homework by Mrs Kelly at some points throughout the year, this is usually Purple Mash homework and login details are provided.





PE Days



-
- Key Stage One PE days are **Tuesday** and **Wednesday**.
 - Please make sure that earrings are removed on those days as we cannot do this ourselves in school, in line with county policy.
 - PE kits consist of only shorts and a t-shirt. The children will need footwear on some occasions throughout the year but if this is the case, we will inform you as and when.
 - There are times across the year when we do implement extra PE into our curriculum. For example, training for sports competitions and you will be informed of any changes/sports competitions.

Snack Money



-
- Snack money is £1 a week. You are welcome to pay either weekly or for the full half term at once. This also pays for a special snack for the children each Friday to enjoy during golden time.
 - Each day the children are given a piece of fruit and a drink.
 - When your child starts Year 1, I will ask whether your child would prefer water or milk. There is no extra cost for this.

Reading in Key Stage 1

Children learn
4,000 to 12,000
words per year
through reading.

WE ARE
TEACHING

Reading improves lives, it's a fact! Here in Key Stage One we invite you to work with us and help your child to become a life long reader.

Book Bags must be in school every single day.

We hold **Class Library** each Friday. The children select their own book of choice to take home for that week, returning it the following Friday.

Attendance Matters

- Please make sure that children are in school everyday, unless they are genuinely ill, or have a medical appointment.
- We cannot catch up on missed learning and we do not want the children to miss out on their education.



Queries are always welcomed

- If you have any further queries, please do not hesitate to get in touch. Either in person, on the telephone, via email or by messaging us on Dojo.
- Class Dojo is our online school platform for communication. If you have any troubling in accessing it, please speak to one of us.
- Finally, can we ask that you please check out our school website;
<http://www.smhwkt.cumbria.sch.uk/>

Our website is constantly updated and newsletters are added and lots more information!



TEACHERS
encourage
minds to *Think*
hands to *Create*
& *Hearts*
to love

Thank you for reading the information all
about the transition into Year 1.

We are all looking forward to welcoming and
teaching the children in September!

Miss Birch 😊